

# Michigan AgFacts<sup>©</sup>

## Michigan Agri-Business Association

1501 North Shore Dr., Suite A, East Lansing, MI 48823  
(517) 336-0223 ♦ FAX (517) 336-0227 ♦ www.miagbiz.org  
**James E. Byrum, President**

### Upcoming Events:

MARK YOUR  
CALENDARS!

**December 15, 2015**

2016 Dry Bean  
Outlook  
Conference  
Bay City, MI

**January 11-13, 2016**

Winter Conference &  
Trade Show  
Lansing, MI

**February 5, 2016**

CCA Exam  
Holiday Inn Express  
Okemos, MI  
Registration & Info  
*Registration period October  
5 - December 11, 2015*

**June 28, 2016**

Scholarship Golf  
Outing  
Hawk Hollow, Bath, MI

**September 8, 2016**

Ed Brown Memorial  
Golf Outing  
St. Louis, MI

**September 9 - 11, 2016**

Outlook Conference  
Mackinac Island, MI

**November 6, 2015**

**AGFACTS<sup>©</sup> FACT OF THE WEEK:** Fruit farming began sometime between 6000 and 3000 B.C. Figs were one of the first cultivated fruit crops.

**MABA WILL HOST A FORUM ON THE VETERINARY FEED DIRECTIVE (VFD) AND MICHIGAN FEED LAW CHANGES ON WEDNESDAY, DECEMBER 2ND.** Registration is now open for MABA members to learn more about these changes. VFD implementation will have a major impact on feed mills and users across the state, and this session will provide up to date information for those in the industry in order to be proactive and prepared. The half-day program will be hosted at Agro-Culture Liquid Fertilizers in St. John's and feature presentations from experts at the American Feed Industry Association (AFIA), Michigan Department of Agriculture and Rural Development (MDARD), Michigan's State Veterinarian and several feed mills operators. Registration is \$25 and can be [accessed here](#). Space is limited, so early registrations are recommended.

**HARVEST IS WINDING DOWN AFTER A NEAR PERFECT FALL, WEATHER WISE.** Generally, except for areas that experienced heavy rain events during the growing season, yields are good to excellent, as is the quality of grain. Storage is at a bit of a premium, especially for dry beans and soybeans, but in the end, everything will find a home.

**FARMERS ARE ADVISED TO NOT JUST LOOK AT THE BOARD PRICE OF A COMMODITY, BUT RATHER THEIR REVENUE PER ACRE AS THEY THINK ABOUT PLANS FOR NEXT YEAR.** Yields have steadily increased, and what was the old norm is just that. As someone pointed out to me today, our "excess" corn production in Michigan that we need to ship elsewhere is at about the same level it was before the five Michigan ethanol plants were built. Look for more ethanol production here...we are an ethanol "deficit" state, after all, and with current basis levels and corn supply, ethanol is a hot topic.

**SO A YEAR AGO WE WERE EXPERIENCING UNSEASONABLY COLD WEATHER ON THIS DATE, WITH SNOW MIXED IN.** There was even a severe shortage of natural gas in Michigan's Thumb which resulted in some grain handlers having to shut down driers so home owners could keep warm with gas so short....and this year, unseasonably warm weather...70's this week, and a great, dry harvest. There is less grain drying this year than in recent years and excellent grain quality...about the opposite of last year.

**AFTER YEARS OF DEBATE AND MONTHS OF FALSE STARTS, THE MICHIGAN LEGISLATURE AND GOVERNOR HAVE AGREED TO A "PACKAGE" TO FUND IMPROVEMENTS TO MICHIGAN'S ROADS.** The agreement which is currently on the Governor's desk awaiting his signature has already passed both the House and Senate after long hours of arm twisting earlier this week.

## 2015 Diamond Sponsors

The Andersons, Inc.

Asgrow/DEKALB

BASF – The Chemical Co.

Bayer CropScience

CHS Inc.

Consumers Energy

Crop Production Services

Dow AgroSciences

DuPont Crop Protection

DuPont Pioneer

ESN Smart Nitrogen

GreenStone Farm  
Credit Services

Helena Chemical Co.

I-69 Thumb Region

Michigan Agricultural  
Commodities, Inc. (MAC)

Michigan Milk  
Producers Assn.

PCS Sales

Syngenta

Wilbur-Ellis Co.



SEE ALL OF OUR  
SPONSORS...

[More Sponsorship Info](#)

The package will eventually invest \$1.2 billion more in the state's infrastructure, but not all at once, and only after several years. In order to raise the funds, the gas tax will increase 7.3 cents per gallon, to 26.3 cents per gallon, and will take effect on January 1, 2017. The agreement will also increase the diesel fuel tax from 15 cents to 26.3 cents per gallon. The gas tax increase will raise an additional \$400 million for roads. Vehicle registration fees will also increase about 20%, down from the 40% increase proposed a couple weeks ago, and will raise an additional \$200 million for roads. \$600 million in existing General Fund revenue will be dedicated to roads at a future date. There will also be a new surcharge for electric vehicles because they pay no or very little gas tax. To try and gain votes, the Homestead Property Tax Credit will produce an additional \$200 million in tax relief, essentially balancing out the tax increase in the registration bill. The legislation also will allow the state income tax rate to drop from the current 4.25% if General Fund revenues increase above the rate of inflation times 1.425, effective in tax year 2023. To see more detail, [click here](#).

**THE PIECE OF THE PACKAGE THAT INCREASES THE STATE'S 15-CENT DIESEL TAX TO MATCH THE GAS TAX WILL HAVE MORE IMPACT THAN MANY REALIZE.** The Teamsters Union is one of the interest groups that have successfully resisted that push over the years. Teamsters lobbyist Bill Black says the general public will ultimately feel the impact of the increase on their pocketbook. "Carriers won't eat that. (They) will pass the cost on," said Black, saying truckers haul everything from milk to cell phones. Black said the union and others made those arguments to negotiators on the road package, but in the end they were ignored.

**BOTTOM LINE, WHILE LEGISLATORS AND THE GOVERNOR ARE CONGRATULATING THEMSELVES FOR PASSING SOMETHING, IN THE SHORT TERM, IT ISN'T MUCH.** It will be several years before the full impact of the "increase" in road spending will hit the "dirt," so to speak. In fact, the real irony is that much of what was passed won't even be implemented until most in the current legislature have left the legislature because of term limits. The gas tax hike and vehicle registration fee increase won't take effect until January 1, 2017, the \$600 million in dedicated General Fund money will start with \$150 million in FY 2019, increase to \$325 million in FY 2020 and cap at \$600 million in FY 2021. Also, the \$600 in general fund money will have to come from somewhere...cuts in the current general fund budget that have yet to be identified.

**IT IS ALSO INTERESTING TO NOTE THAT OUTSIDE OF A FEW DEMOCRATIC OUTLIERS, MOSTLY REPUBLICANS VOTED IN FAVOR OF THE ROADS PACKAGE.** That means that generally Republicans voted to increase taxes and Democrats didn't. The backlash toward some of those Republicans that did support better roads, and voted to increase taxes and fees is pretty intense. Interesting turn of events...and position!

**THE HOUSE ENERGY POLICY COMMITTEE CONSIDERED MORE THAN 30 AMENDMENTS TO AN ENERGY REFORM PACKAGE THAT FINALLY CLEARED THE COMMITTEE, BUT ONLY AFTER MAJOR CHANGES.** A stronger energy efficiency program and a goal that 30% of the state's power comes from renewable sources were added to bills after a prolonged six-hour committee meeting Thursday night. The main bill in the package includes restrictions on electric energy choice, and creates a new administrative process between utilities and state officials to establish how much power will come from renewable sources. In order to get the necessary "yes" votes, Nesbitt had to compromise and step back from his desire to

[continued on next page](#)

eliminate Michigan's electric choice market. One amendment to the package that received overwhelming bipartisan support eliminated the concept of burning "hazardous waste," pet coke, coal ash and tires as a renewable energy source. Nesbitt said he wants to see energy reform move to the Governor's desk by the end of the year, but the bills may not be taken up on the House floor next week as legislators work through and learn more about the legislation. After next week, the Legislature takes its two-week hunting/Thanksgiving break, and won't return to Lansing until December 1<sup>st</sup>. MABA continues to be a strong advocate for energy efficiency programs and praised the committee for changing the legislation to enhance those programs. "Energy that is not used – or saved - through energy efficiency programs is the cheapest way to meet energy demand," said Jim Byrum, MABA President. "Reducing use or demand in this case helps the utility on the supply side, and energy customers reduce their costs."

**THE ENERGY DEBATE IS COMPLEX AND EMOTIONAL AS IT PITS FREE MARKETERS AGAINST THOSE THAT WANT MANDATES, REGULATED UTILITIES AGAINST THOSE THAT WANT LOWER RATES, AND ENERGY CHOICE ADVOCATES AGAINST THOSE MAD THAT THEY CAN'T PARTICIPATE IN THE CHOICE PROGRAM.** This legislation is a long way from done, but the forces involved are aggressive and high profile. The challenge is that energy policy is one that should help the state become more competitive, especially with Michigan having some of the highest utility rates in the Midwest. Hopefully the end product does that.

**THE U.S. SENATE THIS WEEK CONSIDERED A PAIR OF MEASURES TO STRIKE DOWN THE OBAMA ADMINISTRATION'S CLEAN WATER ACT RULE RE-DEFINING THE "WATERS OF THE UNITED STATES" (WOTUS).** Senate Majority Leader Mitch McConnell filed cloture on a bill (S 1140) that would require the administration to write a new WOTUS rule in consultation with state and local governments. That vote failed, but a resolution of disapproval of WOTUS was brought to the floor, and passed with a simple majority. The irony is that this resolution would have to be signed by the President, which he has said won't happen. Essentially, more time and energy that won't amount to any change at all.

**THE EPA HAS OPENED A COMMENT PERIOD ON THEIR PROPOSAL TO REVOKE U.S. TOLERANCES OF THE INSECTICIDE CHLORPYRIFOS.** It should be noted that this proposal is the result of a recent Court of Appeals order requiring the EPA to respond to a dissident petition on the tolerances by October 31<sup>st</sup>. The EPA is proposing to revoke the tolerances only because of the court order. Dow AgroSciences disagrees with the EPA and remains confident that all U.S. tolerance issues for the continued use of chlorpyrifos can be resolved. EPA has said that it will not decide whether or not to act on its proposal to revoke tolerances until it has reviewed input from interested stakeholders. MABA will be offering comments on the proposal urging the EPA to maintain the established chlorpyrifos tolerances.

**A CONSORTIUM OF 48 SCIENTISTS FROM 50 INSTITUTIONS IN THE UNITED STATES IS CALLING FOR AN AMBITIOUS RESEARCH EFFORT TO UNDERSTAND AND HARNESS MICROBIOMES, THE COMMUNITIES OF MICROORGANISMS THAT INHABIT ECOSYSTEMS.** Microbiomes prosper in environments as varied as the human gut to the ocean. The aim is to use these critters to improve agriculture, bioenergy, human health and the environment. The proposal calls for a major research project to develop new research tools and collaborations that will unlock the secrets of these microbial communities. More information is [available here](#).

continued on next page

## [MABA IN THE NEWS](#)



[CLICK TO SEE MABA PRESS RELEASES!](#)



### INDUSTRY CALENDAR

Do you have an industry related event you would like to put on the calendar? Please contact our office at [maba@miagbiz.org](mailto:maba@miagbiz.org)

### **WHILE MICHIGAN IS PHASING OUT PERSONAL PROPERTY TAX (PPT) FOR MOST BUSINESSES BEGINNING IN 2014, A NEW “TAX” IS COMING AT US.**

The new Statewide Essential Services Assessment (SESA) is an effort by municipalities to recoup some of the lost revenue with the phase out of the PPT. Below are a couple links to factsheets that should be helpful to you to understand the SESA. The [first factsheet](#) provides an overview of the PPT exemption that was passed by the legislature in the fall of 2013, and the new SESA that was implemented as part of that legislation. The [second factsheet](#) provides additional information on the SESA, and the minimum eligibility criteria for projects to be considered for 50% or 100% exemptions. While the document states that a project’s minimum private investment is \$25 million to be considered, MEDC only will consider SESA exemptions for projects that are determined to be transformational to a region and the state, based upon a number of factors, including, but not limited to, very large job creation and private investment, high wage levels and the overall transformational impact to the community and state. If you need help understanding this, we have a resource person that can help...just let us know.

### **TOP EXECUTIVES OF SOME OF THE LEADING FOOD AND AGRICULTURAL BUSINESSES IN THE UNITED STATES HAVE TEAMED UP WITH THE BIPARTISAN POLICY CENTER (BPC) IN A BID TO REFRAME THE DEBATE ABOUT SUSTAINABLE AGRICULTURE IN A CHANGING CLIMATE.**

DuPont, Elanco, Kellogg and Land O’Lakes are the initial members of a new CEO Council on Sustainability and Innovation that hopes to identify ways that they can “combat and adapt to the realities of increasing climate volatility, a growing population and other threats to a stable food supply.” Former Agriculture Secretary Dan Glickman, a BPC fellow, kicked off an hour-long discussion with three of the CEOs in Washington last week, saying industry is responding to market forces by adapting to changed weather and climate patterns and meeting customer demands. “Feeding the world in a climate-compromised environment will be one of the defining challenges of the century,” Glickman said. “The food and agriculture sector not only has to adapt to these changing conditions but improve the resiliency and productivity of the entire food chain and mitigate the effect of a changing climate,” he added.

**ON A CONFERENCE CALL WITH INVESTORS THIS WEEK, ANDERSONS, INC. CHAIRMAN MICHAEL ANDERSON SAID THAT THE COMPANY COULD DOUBLE PRODUCTION AT ITS ETHANOL PLANT IN ALBION.** Reuters reported the plant has an annual capacity of 55 million gallons per year. Anderson said that the plant was recently approved as an "efficient" facility by the U.S. Environmental Protection Agency, allowing it to create ethanol at volumes above current levels.

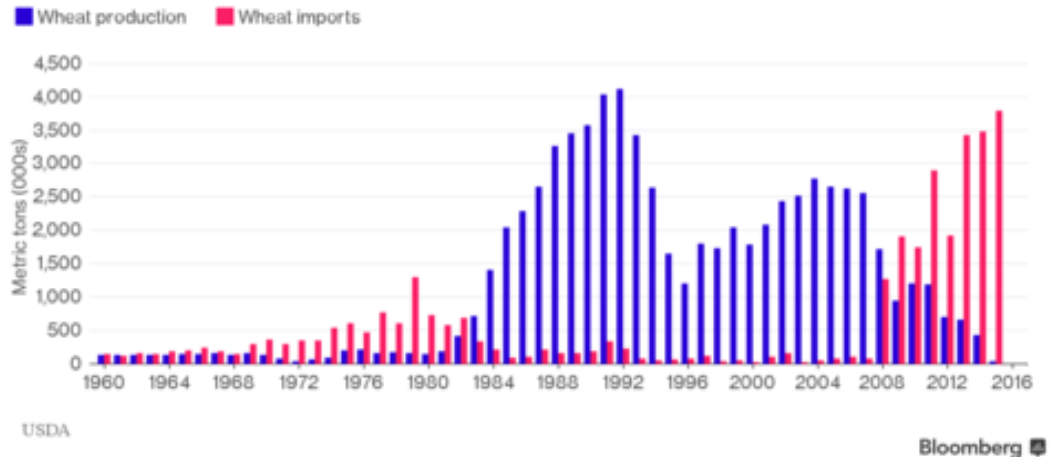
### **FOR DECADES, ONLY A FEW FEATURES PUNCTUATED THE VASTNESS OF THE SAUDI DESERT: OIL WELLS, OAISES -- AND WHEAT FIELDS.**

Despite virtually no rain, the world’s largest oil producer once grew so much wheat that their exports fed Kuwait, United Arab Emirates, Qatar, Bahrain, Oman and Yemen. All their production was irrigated with pivots supplied by ground water. While the oilfields remain, the wheat farms are disappearing to save the aquifers supplying them. For the first time next year, Saudi Arabia will rely almost completely on wheat imports. The shift toward imports started about eight years ago. Ahmed bin Abdulaziz Al-Fares, managing director of the Grain Silos and Flour Mills Organization, the Saudi agency in charge of cereal imports, said last month that Saudi Arabia will import 3.5 million metric tons in 2016, a 10-fold increase from 2008. By 2025, demand is forecast to rise to 4.5 million tons as population growth drives demand, positioning Saudi Arabia as one of the 10 biggest wheat buyers in the world.

*continued on next page*

## The Rise and Fall of Saudi Wheat Production

Imports taking over as government closes farms



**Showcase of Products & Services** is an opportunity for companies to advertise industry related products and services on our website.

↓ [Click link!](#) ↓



**CHIPOTLE MEXICAN GRILL IS TEMPORARILY CLOSING MORE THAN 40 RESTAURANTS IN AND AROUND SEATTLE AND PORTLAND, OREGON, AS HEALTH OFFICIALS INVESTIGATE AN E. COLI OUTBREAK THAT HAS MADE AT LEAST 22 PEOPLE SICK.** In a statement to Reuters, Chipotle said it had received notice from health officials that some of the people who got sick ate at six of the chain's restaurants. "Out of an abundance of caution," the company said, it temporarily closed all its restaurants in the area — 43 locations in two states. Reuters notes that this is the third food contamination outbreak linked to Chipotle since August. They add, "Those earlier cases involved salmonella and the highly infectious virus norovirus. Short term they (Chipotle) will take a hit but it will blow over quickly. They have a lot of customer goodwill." said Bob Goldin, executive vice president at U.S. restaurant consulting firm Technomic.

**PUBLIC SENTIMENT ON GENETICALLY MODIFIED ORGANISMS (GMOs) IS PRESENTING A CHALLENGE FOR THE SUGAR BEET INDUSTRY.** Beet sugar's share of the U.S. sugar market has slipped to the smallest on record. With farmers planting about 80% of their acres with RoundupReady® seed, boosting yields and slashing herbicide use, farmers aren't reversing that decision. And even though sugar from beets and cane look and taste the same, consumers are increasingly questioning their food source. Beet farmers are boosting lobbying efforts in Washington and launching a social media campaign to refute the "anti" GMO movement. Cane growers are reaping the benefits of this situation as there is no genetically modified cane seed.

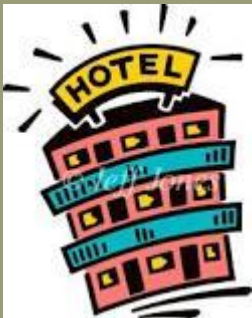
**COMPARED TO CORN ETHANOL, BIOFUELS FROM NEXT-GENERATION FEEDSTOCKS COULD GREATLY REDUCE CARBON EMISSIONS THAT CONTRIBUTE TO CLIMATE CHANGE, ACCORDING TO A NEW REPORT BY THE ENVIRONMENTAL WORKING GROUP (EWG) AND UNIVERSITY OF CALIFORNIA.** EWG measured the carbon emitted over the life cycle of ethanol made from switchgrass and from corn stover, the stalks and leaves left on fields after harvest. EWG's analysis found that the life-cycle carbon intensity of corn stover ethanol is 96% lower than gasoline and that of switchgrass ethanol is 47% lower than gasoline. By contrast, EPA studies show that the life-cycle carbon intensity of conventional corn ethanol is greater than gasoline.

[continued on next page](#)

## MEMBER BENEFITS!

Are you planning to stay in Lansing/East Lansing overnight and need a hotel room?

[Click here](#) for a list of our Member Benefit Hotel Rates!



**IT WAS BROUGHT TO OUR ATTENTION THIS WEEK THAT IF YOU ARE OPERATING DRONES, OR EVEN CONTRACTING FOR THEIR OPERATION, YOU NEED TO MAKE SURE AND CHECK YOUR INSURANCE.** This is very important as there are more and more situations of drones raising privacy concerns and other problems, including interference with commercial air traffic. The exposure could be considerable!

**NITRATES ARE LEADING TO URANIUM CONTAMINATION IN GREAT PLAINS AND CALIFORNIA AQUIFERS, ACCORDING TO A RECENT STUDY.** Nitrates originating from fertilizers and manure mobilize naturally occurring uranium through a series of bacterial and chemical reactions, oxidizing the radioactive mineral and making it soluble in groundwater. University of Nebraska-Lincoln researchers Karrie Weber and Jason Nolan found that the High Plains aquifer contains uranium concentrations up to 89 times the EPA standard and nitrate concentrations up to 189 times greater. The uranium and nitrate levels of the California-based Central Valley aquifer measured up to 180 and 34 times their respective EPA thresholds. According to Weber, peer-reviewed studies have also indicated that food crops can accumulate uranium when irrigated by water containing high concentrations of it.

**KELLOGG PLANS TO SOURCE ONLY CAGE-FREE EGGS AND ELIMINATE PORK GESTATION CRATES FROM ITS SUPPLY CHAIN BY 2025, THE COMPANY ANNOUNCED LAST WEEK.** The company has already reduced its use of eggs from caged hens for production of its Morningstar Farms products by 20 million eggs since 2007.

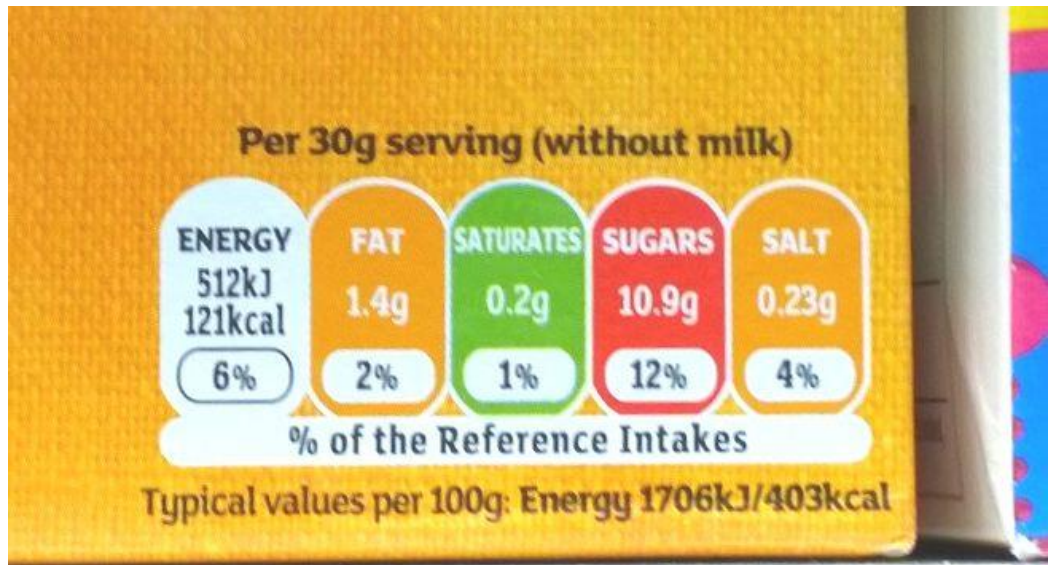
**AGRIUM HAS BEEN NAMED A GLOBAL LEADER IN ENVIRONMENTAL EDUCATION BY THE NORTH AMERICAN ASSOCIATION FOR ENVIRONMENTAL EDUCATION (NAAEE).** The association recently awarded the company their Outstanding Service to Environmental Education Award. NAAEE promotes and celebrates environmental education initiatives that teach children and adults how to learn about and investigate their environment – and to make intelligent, informed decisions about how they can take care of it. Agrium received the award thanks to their [Caring for our Watersheds](#) (CFW) program. CFW asks students to submit a proposal that answers the question, “What can you do to improve your watershed?” Students must research their local watersheds, identify environmental concerns and propose realistic solutions. To learn more about Agrium’s youth education programs please contact [Sustainability@agrium.com](mailto:Sustainability@agrium.com).

**MCDONALD’S RECENTLY POSTED A POSITIVE SALES QUARTER, A SOMEWHAT RARE OCCURRENCE LATELY, AND CEO STEVE EASTERBROOK ATTRIBUTES AT LEAST SOME OF THAT GROWTH TO THE CHAIN’S DECISION TO PUT BUTTER, INSTEAD OF MARGARINE, BACK IN EGG MCMUFFINS.** “Customers appreciated the change and we saw a double-digit increase in the number of Egg McMuffins sold immediately following the rollout,” he said. This switch will have a huge impact on the entire U.S. dairy industry. McDonald’s will add another five to six hundred million pounds of milk to its annual dairy purchases. The ripple effect, when other chains follow suit, will make the impact even bigger.

continued on next page



**BAYER REPORTS STRONG EARNINGS IN THE THIRD QUARTER OF 2015. DESPITE A WEAKER MARKET ENVIRONMENT, SALES AT CROPSCIENCE WERE UP AGAINST THE STRONG PRIOR-YEAR PERIOD.** Earnings also were positive because of currency effects. Sales increased by 9.5% to EUR 2,113 million (Q3 2014: EUR 1,929 million). Crop Protection/Seeds posted a slight sales increase in a weaker market environment, particularly in Latin America. The subgroup achieved its highest sales growth in the Asia/Pacific region, at 7.2%. Business expanded by 4.3% in North America and 3.1% in Europe. By contrast, sales in the Latin America/Africa/Middle East region fell by 1.2%. More information is [available here](#).



**DURING A RECENT TRIP TO EUROPE, MABA LEADERS LOOKED AT RETAIL LABELING REQUIREMENTS FOR VARIOUS FOOD PRODUCTS.** The traffic light system clearly and simply identifies key health attributes of various foods. Obviously green is good and red, not so much. In addition, produce is often identified with the variety of the particular crop, grower's name and where it was grown.

continued on next page

**DEERE & COMPANY AND THE CLIMATE CORPORATION, A SUBSIDIARY OF MONSANTO COMPANY, HAVE SIGNED DEFINITIVE AGREEMENTS FOR DEERE TO ACQUIRE THE PRECISION PLANTING LLC EQUIPMENT BUSINESS AND TO ENABLE EXCLUSIVE NEAR REAL-TIME DATA CONNECTIVITY BETWEEN CERTAIN JOHN DEERE FARM EQUIPMENT AND THE CLIMATE FIELDVIEW™ PLATFORM.** The agreements represent the industry's first and only near real-time in-cab wireless connection to John Deere equipment by a third party. "To maximize the value of digital agriculture, farmers need solutions for simple and seamless collection of in-field agronomic data," said Mike Stern, president and chief operating officer for The Climate Corporation. "As a result of these milestone agreements, farmers will experience the fastest, most frequent and highest resolution third-party connectivity between John Deere's equipment and the Climate FieldView platform." John May, president, agricultural solutions and chief information officer at Deere, said, "The agreements we are announcing allow John Deere to extend the range of retrofit options available from Precision Planting to many more products and into new geographies. John Deere strengthens its position as the most open platform in the industry both in our equipment and the cloud-based data management solution known as the John Deere Operations Center." Under the terms of the agreements, Deere will purchase Precision Planting while Climate will retain the digital agriculture portfolio that has been integrated into the Climate FieldView platform. Stern said, "Our agreements enable farmers to combine the industry-leading technology of John Deere equipment with Climate FieldView, the platform that offers farmers the broadest equipment connectivity in the industry backed by data science. This connectivity allows farmers to collect and directly share data to the Climate cloud, enables data visualization in the cab and supports the development of customized data science-driven insights." The companies said customers will have the option to share their current and historical agronomic data between the John Deere Operations Center and the Climate FieldView platform and seamlessly execute agronomic prescriptions with John Deere equipment.

**DUPONT HAS CELEBRATED THE OPENING OF ITS CELLULOSIC BIOFUEL FACILITY IN NEVADA, IOWA, THE WORLD'S LARGEST CELLULOSIC ETHANOL PLANT, WITH A CAPACITY OF 30 MILLION GALLONS PER YEAR.** The raw material used in the cellulosic plant is corn stover. Cellulosic ethanol will further diversify the transportation fuel mix, just as wind and solar are expanding the renewable options for power generation. More than 500 farmers will provide the annual 375,000 dry tons of stover needed to produce the ethanol.

**MONSANTO IS GOING TO CLOSE THREE RESEARCH AND DEVELOPMENT CENTERS IN 2016 WITH A LOSS OF ABOUT 90 JOBS.** The facilities are in Middleton, WI, and Mystic, CT, both of which focus on seed trait development research, and Research Triangle Park, NC, which focuses on research on plant screening and phenotyping. The company plans to close the Middleton center in the first half of 2016, and the Mystic and Research Triangle Park locations in the second half of the year. The company plans to move about 65 people from the closing facilities to their Chesterfield Research Village in the St. Louis, MO, area. Monsanto, which owns the facilities in Wisconsin and Connecticut, said it is looking for buyers for those properties and for a replacement tenant for its leased property in North Carolina. Currently the company has about 22,500 employees at more than 400 facilities worldwide in over 60 countries. Earlier this month, Monsanto said it planned to cut 2,600 jobs and restructure its operations in a bid to cut costs.

continued on next page



**CHINA HAS ENDED ONE OF THE MOST AMBITIOUS DEMOGRAPHIC EXPERIMENTS IN HUMAN HISTORY, ABANDONING THE LIMIT OF ONE CHILD FOR MOST FAMILIES TO FOSTER THE POPULATION GROWTH REQUIRED BY THE WORLD'S SECOND-BIGGEST ECONOMY.** Introduced by Deng Xiaoping in 1979 to help preserve the nation's scarce resources, the baby limit now threatens to undermine the country's growth. The working-age population in China shrank last year for the first time in two decades and the population of senior citizens is projected to grow rapidly. When the policy was adopted, the thinking was that the birth rate of almost 3 children per woman was a drag on growth. Since then, China's population has grown to about 1.36 billion, almost 20% of the world's total, up from about 930 million in 1976. After decades of discouraging people from having children, the challenge now is changing the mindset of potential parents worried about the costs of expanding their families. Only 1.1 million of the 11 million couples eligible to have second child under a previous policy relaxation in December 2013 applied for permission.

**THE FINAL COAL SHIPMENT HAS BEEN SCHEDULED FOR THE CONSUMERS ENERGY B.C. COBB PLANT IN MUSKEGON.** The James R. Barker could arrive November 8<sup>th</sup> at the plant. Consumers' spokesman Roger Morgenstern says that the ship was to be loaded with 58,000 tons of coal in Superior, Wisconsin. The plant is scheduled to shut down in April. Demolition of much of the facility could take place by the end of 2018. At least nine coal plants in the state are slated to shut down in the next 10 years due to emission restrictions and lower electricity demand.

**THERE IS, AND WILL CONTINUE TO BE CONSIDERABLE INFORMATION PUBLISHED ABOUT THE IMPACT OF THE FOOD SAFETY MODERNIZATION ACT ON THE COUNTRY FEED INDUSTRY.** If you want to be added to a special list to receive this information, let us know by e-mail to [jim@miagbiz.org](mailto:jim@miagbiz.org). There are changes coming and we have great resources to make sure you are up to date on what those changes mean to you.

**WE WOULD LIKE TO THANK OUR 2015 SUSTAINING SPONSORS FOR THEIR GENEROSITY AND SUPPORT.** [Click here](#) for a list of those that participated in 2015. In this program we only ask for one contribution to Association activities each year and you will receive recognition at all major MABA events, in each weekly AgFacts and on the MABA web site. There are four levels of contributions; Silver at \$500, Gold at \$1,000, Platinum at \$2,500 and Diamond at \$5,000. If you are interested in becoming a 2016 Sustaining Sponsor please [click here](#) to obtain additional details.

**JEFF KUEHNLEIN WITH MICHIGAN AGRICULTURAL COMMODITIES WAS THIS WEEKS WINNER OF THE 2015 EDUCATIONAL TRUST 30-WEEK RAFFLE DRAWING.** He was the winner of \$250 in the 2015 Educational Trust 30-Week Raffle. **Tickets are still available**, for more information and to purchase a ticket, [click here!](#) Congratulations Jeff and thank you for your support of the Educational Trust!



**IT'S NOT TOO SOON TO START PLANNING FOR YOUR ATTENDANCE AT THE MABA WINTER CONFERENCE AND TRADE SHOW.** Mark your calendar now for January 11-13, 2016. The program is still in the development stage but getting close to being finalized. In the meantime you can make your hotel reservations at the Radisson by calling 1-800-333-3333 or online at [www.radisson.com/lansingmi](http://www.radisson.com/lansingmi). Use the **Promotional Code: MIAB16** to receive your discounted group rate of \$121.95 per night. Please visit the MABA Web Site by [clicking here](#) for other hotel options available. *New this year we have a block of rooms at the Hyatt Place in the Eastwood Towne Center.*

continued on next page

**SPEAKING OF THE MABA WINTER CONFERENCE AND TRADE SHOW....**

If you have an interest in exhibiting at the Trade Show please contact Charla at [charla@miagbiz.org](mailto:charla@miagbiz.org). Returning exhibitors have been contacted and given an opportunity to reserve the booth they had in 2015, but late in October the floor will be open to new exhibitors first-come-first-serve. Additional information regarding the trade show can be found on the MABA Web Site by [clicking here](#). If you're interested in reserving a booth please complete the Booth Reservation Form and return it to us so we can save you a spot.

**REGISTRATION IS NOW OPEN FOR THE NEXT CCA EXAM!** The exam will be February 5, 2016 at the Holiday Inn Express in Okemos, Michigan. The registration period is October 5 - December 11, 2015. [Click here](#) for more details. To order a Michigan study guide, [click here](#).

**THIS MONTH ASMARK IS FEATURING THEIR SIGNATURE SAFE & SOUND ONLINE TRAINING MANAGEMENT TOOLS.** The Safe & Sound Online Training Management tool is ideal for organizations seeking a comprehensive training solution. The platform incorporates advanced technologies to help you manage your employee training from start to finish, simplifying and streamlining the process. [Click here](#) for more information.

**CLASSIFIED**

**MOLINE CO-OP IS SEEKING APPLICANTS FOR THE POSITION OF GENERAL MANAGER.** Moline Co-op, a full service west Michigan Co-op with grain, feed, petroleum, agronomy and all the related services is seeking applicants for the position of General Manager. This position requires the ability to plan and direct all aspects of the co-op, including personnel management, sales and marketing, day to day activities, regulation compliance, and the ability to work with area producers. Experience preferred, but on the job training is possible. To apply, send resume with work history to: Moline Co-op, ATTN: Board President, P.O. Box 290, Moline, MI 49335. Email [davetroost@hotmail.com](mailto:davetroost@hotmail.com) for more information.

**JOIN US ON FACEBOOK, TWITTER, AND LINKEDIN!****NAME THAT LOCATION!**

**DO YOU KNOW WHERE THIS PHOTO WAS TAKEN???** The first person to correctly name the city/location in Michigan, where the picture below was taken, will win a prize! Send your guess by email to [kara@miagbiz.org](mailto:kara@miagbiz.org).

continued on next page



**THERE WAS NOT A WINNER LAST WEEK FOR THIS LOCATION. PLEASE TRY AGAIN!**