

Effective Date: 6/15/2010

Central

Once again the Central region received varying amounts of precipitation. Hail was reported in few locations last week but no reports of damage. The cool weather this past week has helped stressed crops to recover. A large number of the fields in the Fannystelle, Starbuck and Elie region still have water issues and may not be reseeded this year. Reseeding is taking place over the whole region and is not specific to any one crop. Canola is being floated on and harrowed because of wet field conditions. Few producers were able to seed edible beans and soybeans.

Weed control is an issue in certain fields and airplanes are being used. A number of fields have been sprayed in the last week and producers will be keeping an eye on control given the stress on crop and weeds

Full article can be found at:

<http://www.syngenta.ca/Farm/Alerts/AlertDetail.aspx?AlertTypeId=5&alertId=125758>

Source : DePutter Publishing Ltd

Very rough estimates from some trusted veterans in the business about planting progress. I have removed the names of those that sent me this information, but it is clear that western Tuscola and Huron are probably much further along than the eastern side of those counties, and there are water problems - too much - in northern Huron County...Let me know if you have any comments or questions...

Bay County

The growers in Bay County should be all planted

Gratiot County

In the Breckenridge area very few have been planted, maybe 10-15% at most. I expect this week to be very busy in planting providing that we don't receive much more moisture. They have started to work dry bean ground this past week-end. The fields still have wet holes in them and I think guys will push the envelope a little to get them planted. Breckenridge area maybe 10-15% planted, it will wed. before we get back in the fields if we don't get anymore rain.

Tuscola County

I felt last week 40% was planted we did do some planting this weekend 10% we will have a good week so as of 6-14-10 50%

Tuscola area should be at least 80% done or more.

Huron County

Huron and Sanilac county are probably 60-70% planted.

Planting will start today (Northern Huron County) with the better fields as they dry they will proceed to the flood zone fields probably towards the latter half of the week. As far as planting we are about 40% planted, guessing that 10-15% will be replanted.

Sanilac County

Huron and Sanilac county are probably 60-70% planted.

General Conditions:

We had some rained out areas near Bad Axe and Ruth that needed replanting.

I believe everyone could be planting today if they need too!

Crop condition weekly report for week ending 6/13/10. Data from NASS

Graphs at bottom of page include:

- Dry Edible Beans Planted
- Dry Edible Beans emerged
- Dry Edible Bea Crop Condition
- Dry Edible Beans Planted vs. 5 yr average

Minnesota

Agricultural Summary

Heavy rains and cool temperatures prevailed throughout the state, according to the USDA, NASS, Minnesota Field Office. As of June 13, precipitation was .80 inch above normal statewide. Severe thunderstorms on June 10-11 produced some of the largest precipitation levels of the year, saturating soils and causing standing water in some low areas. Statewide 2.5 days were rated suitable for fieldwork.

Colorado

Agricultural Summary:

Most of Colorado experienced precipitation below average for this time of year except the Front Range and West Slope with above average moisture. Temperatures across the state were considerably higher than normal boosting crop development. Thunderstorms along the Front Range and Eastern Plains once again produced some hail and wind damage to crops. Farmers had 5.7 days for field operations.

North Dakota

General:

Cool, damp weather hampered fieldwork throughout much of the state, according to the USDA, National Agricultural Statistics Service, North Dakota Field Office.

Reporters commented that limited progress was made in spraying weeds and haying. Emergence spraying for control of broadleaf weeds was 50 percent complete,

and spraying for wild oats was 56 percent complete. Topsoil moisture supplies were rated 2 percent short, 78 adequate and 20 surplus. The five-year (2005-2009)

average topsoil moisture rating was 2 percent very short, 9 short, 74 adequate and 15 surplus. Statewide, on average, there were 4.4 days suitable for fieldwork.

Washington

More Cool Wet Weather Caused Stripe Rust Dilemma but Perfect Feeding Conditions for Livestock

Field Crops

Days suitable for fieldwork were 4.1. Stripe rust continued to be a concern throughout the wheat crops. In Walla Walla County, farmers were split

on whether or not to spray because of the winter wheat maturity and low bushel price. In Whitman County, there were several thousand acres

contracted to be flown in the Oakesdale area alone. Spring wheat was reported to be in excellent shape. Many field crops were reported to be a week

or two behind schedule. Standing water in the corn fields caused problems with late planting and growth. Despite much debate, hay producers have been working on their first cutting. The first cutting has seen a lot of rain damage.

Idaho

Agricultural Summary

Temperatures for the week ending June 13 ranged from one degree below normal to six degrees below normal for the state.

Conditions were generally drier for the week. The Northern and Eastern districts received the most moisture.

Major agricultural activities included feeding livestock, spraying, and cutting alfalfa.

Nebraska

Agricultural Summary:

For the week ending June 6, 2010, warm temperatures and widespread rainfall supported crop emergence and development, according to USDA's National Agricultural Statistics Service, Nebraska Field Office. Rainfall limited fieldwork to 4.6 days.

This delayed planting of the last fields of soybeans and sorghum and challenged hay producers with hay cut. Heaviest amounts of precipitation fell across the eastern half of the state.

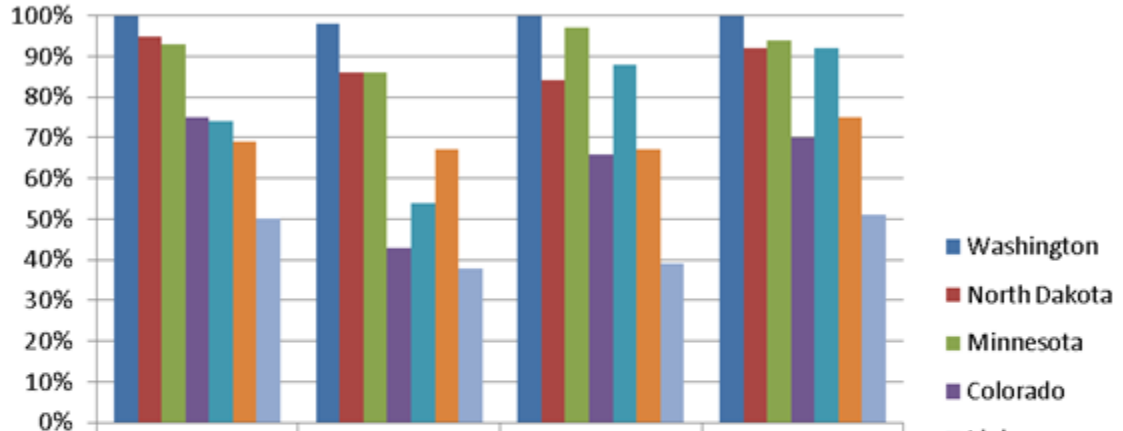
Winds quieted down allowing herbicide applications. Hail was recorded in a number of areas during the week.

Michigan

Wet Weather Continues

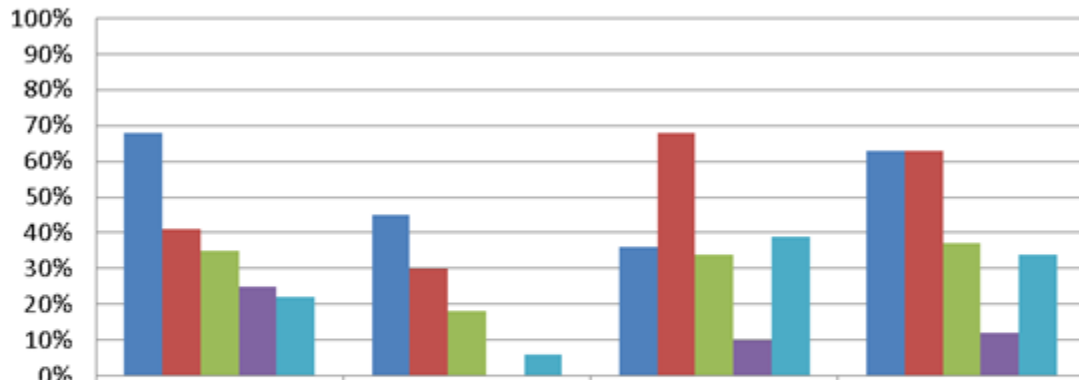
Four days were suitable for fieldwork during the week ending June 13, according to the USDA, NASS, Michigan Field Office. Precipitation varied from 0.31 inches in the central Lower Peninsula to 2.29 inches in the western Upper Peninsula. Average temperatures ranged from 1 degree below normal in the south central Lower Peninsula to 3 degrees below normal in the western Upper Peninsula. It was generally cool all week, and more rain kept fieldwork to a minimum. Farmers appreciated the rain in northern Michigan. "We finally received some much needed rain, which has improved all crops. Cattle are now having good pasture," stated one reporter from the northern tip of Lower Peninsula. While farmers in the north Lower Peninsula welcomed the rain, other producers across Michigan would rather have missed it. Many fields across the state were saturated. It has been too wet to harvest hay, and conditions made spraying weeds and nitrogen application very difficult. "Another tough week to get fieldwork done and now armyworms are in the wheat. Some farmers will "mud" in the spray so they can save the wheat crop," stated one farmer in southeast Michigan.

Dry Edible Beans Planted - Week Ending 6/13/10



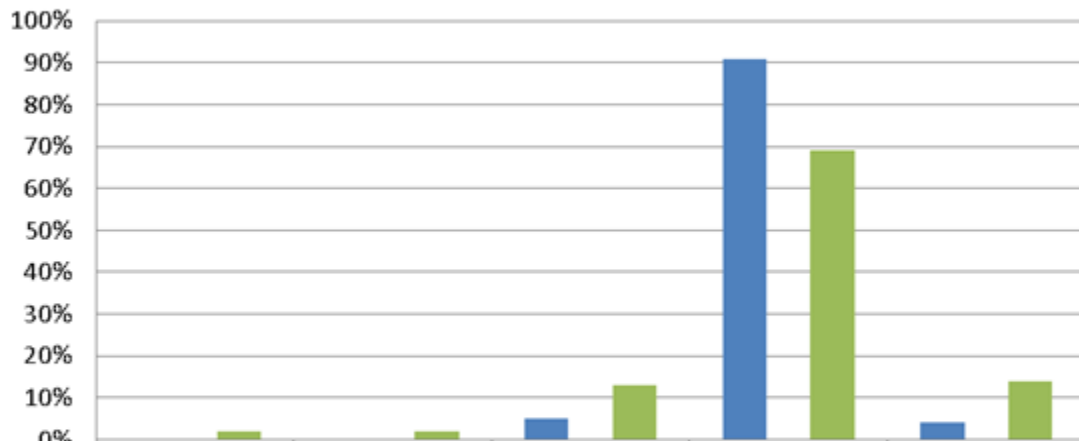
	June 13, 2010	June 6, 2010	June 13, 2009	2005-2009 avg
Washington	100%	98%	100%	100%
North Dakota	95%	86%	84%	92%
Minnesota	93%	86%	97%	94%
Colorado	75%	43%	66%	70%
Idaho	74%	54%	88%	92%
Nebraska	69%	67%	67%	75%
Michigan	50%	38%	39%	51%

Dry edible Beans Emerged - Week ending 6/13/10



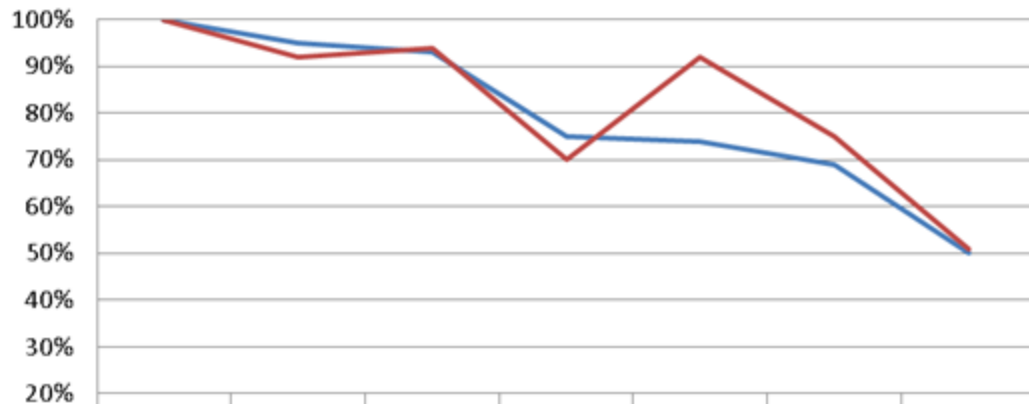
	June 13, 2010	June 6, 2010	June 13, 2009	2005-2009 avg
North Dakota	68%	45%	36%	63%
Idaho	41%	30%	68%	63%
Colorado	35%	18%	34%	37%
Michigan	25%	0%	10%	12%
Nebraska	22%	6%	39%	34%

Dry Edible Beans Crop Condition - Week Ending 6/13/10



	VP	P	F	G	EX
Washington	0%	0%	5%	91%	4%
Minnesota	0%	0%	0%	0%	0%
North Dakota	2%	2%	13%	69%	14%

June 13, 2010 Planted vs 2005-2009 Average



	Washington	North Dakota	Minnesota	Colorado	Idaho	Nebraska	Michigan
June 13, 2010	100%	95%	93%	75%	74%	69%	50%
2005-2009 avg	100%	92%	94%	70%	92%	75%	51%

[MSU earns \\$4 million USDA grant to improve upon the common bean - Michigan ...](#)

Article Ant (press release)

MSU **crop** and soil scientist and Michigan Agricultural Experiment Station researcher Jim Kelly will lend his 30-plus years of expertise in **dry bean** breeding ...

[See all stories on this topic](#)

Montana producers finally get back in fields after spring snow

By TERRI ADAMS, The Prairie Star

Wednesday, May 19, 2010 3:19 PM MDT

http://www.theprairiestar.com/articles/2010/05/19/ag_news/farm_and_field/field3.txt#

Dry beans producers are reporting 12 percent in the ground, well above the 5 percent planted by this time last year but still below the 5-year average of 18 percent.

Wyoming crops, livestock need warmer temps, more rain

By TERRI ADAMS, The Prairie Star

Wednesday, May 19, 2010 3:19 PM MDT

http://www.theprairiestar.com/articles/2010/05/19/ag_news/farm_and_field/field2.txt

Dry beans are just getting started with only 1 percent in the ground. Last year, 8 percent of Wyoming dry beans had been planted by this time but that was ahead of the five-year average of 2 percent.

North Dakota farm prices for April generally lower

By DALE HILDEBRANT, Farm & Ranch Guide

Wednesday, May 19, 2010 4:54 PM CDT

http://www.farmandranchguide.com/articles/2010/05/19/ag_news/regional_news/news7.txt

With the exception of certain livestock prices, North Dakota farm prices continued to tick lower during the month of April, according to the latest price report issued by the North Dakota Field Office of the USDA's National Ag Statistics Service.

The prices for all dry edible beans retreated by \$1.40 per cwt to \$24.30

Pinto bean prices were off \$1.30 per cwt to \$24.60 but Navy beans gained a dime to go to \$29.40 per cwt.